

bimstore.co.uk

ACV
Prestige Solo Boilers
User Guide

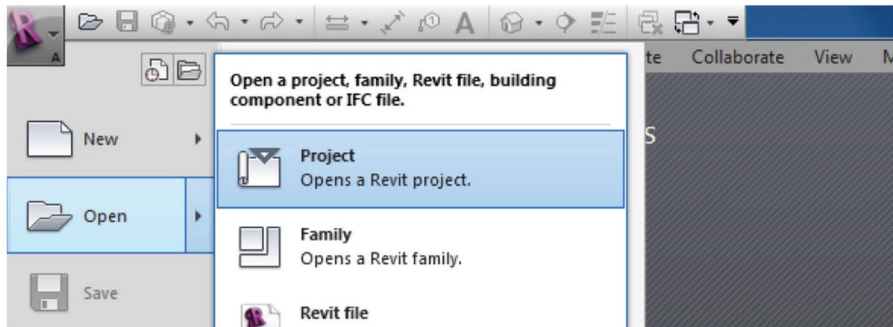
Version 1.0 Revit 2014
October 2015



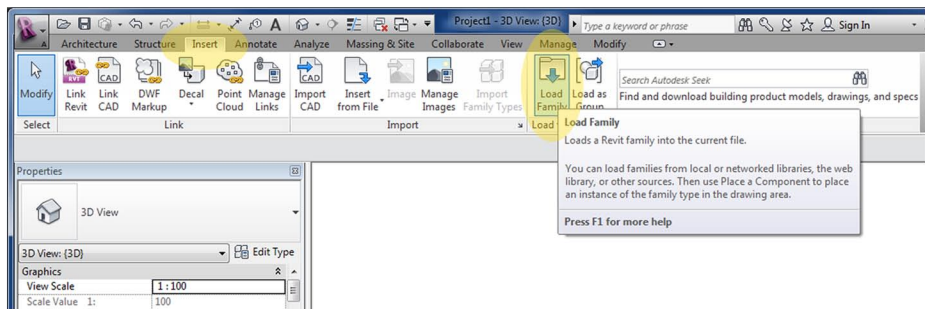
Loading the family components into your project

These components have been created as 'mechanical equipment' families with standard configurations pre-defined as 'types'. You can add the family into your project using the following method.

1. Open the Revit file containing your 'project', and navigate to a an appropriate view.



2. Now save the component that you downloaded from bimstore to your desired location on your computer (In line with your company protocols).
3. To load the component into the project, go to 'Insert Tab/Load Family/Select the component from your saved location' as shown below:

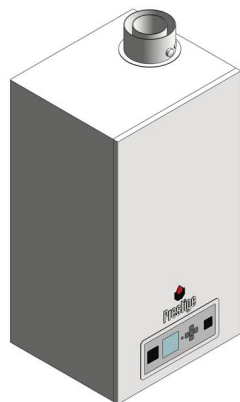


4. The Family is now copied & embedded into your project and can be selected from the 'Project Browser / Families / Mechanical Equipment' selector within your project BIM. (You can delete the item you added to your 'Revit Model' and the Family will remain within your Project Browser.)

Family Component - Prestige Solo Condensing Boilers

This download package is for the ACV, Prestige Solo range of boilers and contains the following types;

1. Prestige Solo;
-42
-50
-75
-100
-120



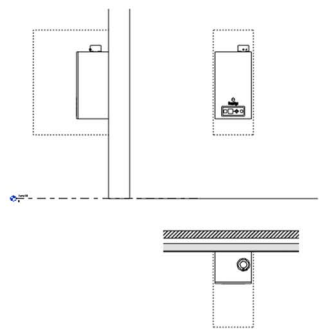
Using the ACV Boiler components

Now embedded into your project the boiler components can be selected from the 'Mechanical Equipment' list in the 'Project Browser' and dragged into your model or by selecting 'Components' in the 'Architecture' tab and selecting the family from the 'Type Selector' drop down in the Properties Box'.

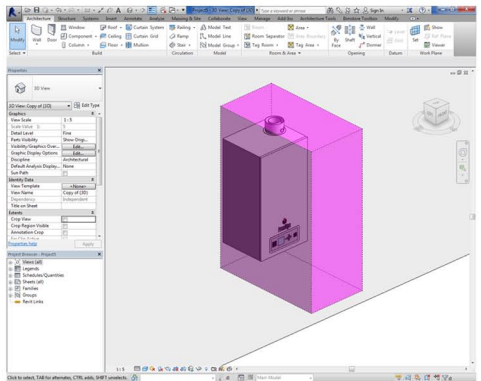
The ACV Prestige Solo family is a 'Face Based' component and will automatically attach to a wall.

1. Go to a suitable view and select the component.
2. Once placed on a wall or reference plane, select the boiler. In the 'Properties' box, under the heading 'Constraints', ensure the 'Elevation' parameter is set to 0, then change the 'Height From Floor' parameter under 'Dimensions' to your chosen height. This will position your boiler correctly and allow for accurate scheduling.
2. Once the family is placed and selected, the 'Properties' box will appear on the screen. Under the heading 'Visibility' is the instance parameter labelled 'Clearance Zone', select the tick box to show the clearance zone required around the boiler.

Clearance zone in plan & elevation views



Clearance zone in 3D view



3. Also in the 'Properties' box under the heading 'Mechanical - Flow' are the instance parameters to control the heating flow and return and pressure drops. Simply input your chosen figures to each parameter.

These MEP piping, duct and electrical connectors can be used to link the boiler components into the project MEP system.

4. When the component is placed and selected, use 'Edit Type' to access the identity data of the components including ACV contact details, COBie data and PDT information.

Other Notes

This component is for design intent only and the data contained within should be treated as such. Please contact the manufacturer for more details and product literature.

You can add these family components to your company template file, they will then be available without loading when starting a new project.

Revisions

Version 1.0 - First Issue

bimstore.co.uk

North East
Spaceworks
Benton Park Road
Newcastle Upon Tyne
NE7 7LX

T: +44 (0)191 223 6600
F: +44 (0)191 223 6610