

bimstore.co.uk

ACV
Prestige Cascade Boilers
User Guide

Version 1.0 Revit 2014
October 2015



Family component 'Type Catalogue'

This family is supplied with a type catalogue which contains all the manufacturers standard type variations. Please make sure the (.txt) file is placed in the same directory when you copy the family file (.rfa) to your library. Do not rename this file or else it will not work.

A type catalogue has been set up to assist the user in selecting only the required types they need. The zip file that you have just downloaded from bimstore will contain two important files to allow this type catalogue to work correctly, these are;

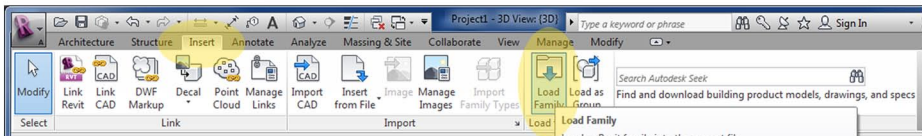
- the .rfa file (Revit family component)
- the .txt of the same name (contains the type catalogue information)

Please follow the below 'type catalogue' method to load the component into your project.

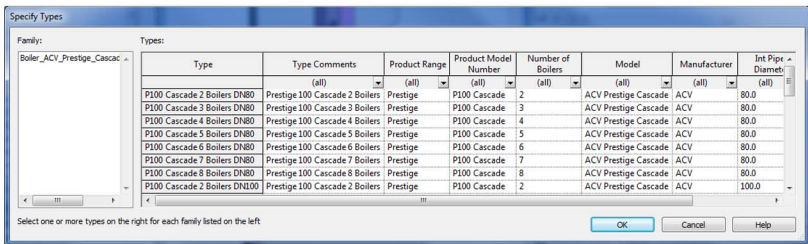
Loading the family components into your project

You can add the family into your project using the following method.

1. Open the Revit file containing your 'project', and navigate to a an appropriate view.
2. To load the component into the project, go to 'Insert Tab/Load Family/Select the component from your saved location' as shown below:



3. Navigate to the location of the saved ACV cascade component that you have just downloaded from www.bimstore.co.uk. Note - Please refer to the 'Type Catalogue' section above and ensure that you have saved the .txt file to the correct location.
4. The type catalogue selector will now appear (see below) select the desired types from the scroll menu, the selection will turn black once picked. To select multiple hold Shift or Ctrl.



5. Click OK to load these components into your project. The Family is now copied & embedded into your project and can be selected from the 'Project Browser / Families / Mechanical Equipment' selector within your project BIM.

Please note that due to the component calculating parametric arrays in the types you have selected this may take a little time. It is recommended that you pick 2-3 types to start with and then repeat the process if required rather than selecting many types at once.

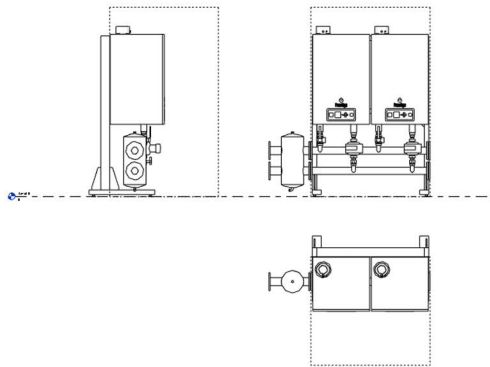
Using the ACV Boiler components

Now embedded into your project the boiler components can be selected from the 'Mechanical Equipment' list in the 'Project Browser' and dragged into your model or by selecting 'Components' in the 'Architecture' tab and selecting the family from the 'Type Selector' drop down in the Properties Box'.

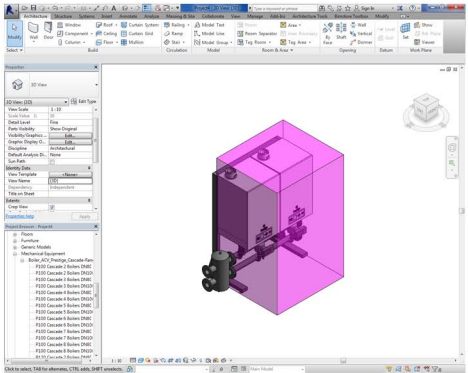
The ACV Prestige Cascade family is a 'Face Based' component and will automatically attach to a floor.

1. Go to a suitable view and select the component.
2. Once the family is placed on a floor or reference plane and selected, the 'Properties' box will appear on the screen. Under the heading 'Visibility' is the instance parameter labelled 'Clearance Zone', select the tick box to show the clearance zone required around the cascade boiler set up.

Clearance zone in plan & elevation views



Clearance zone in 3D view



3. Also in the 'Properties' box under the heading 'Mechanical - Flow' are the instance parameters to control the heating flow and return and pressure drops. Simply input your chosen figures to each parameter.

These MEP piping, duct and electrical connectors can be used to link the boiler components into the project MEP system.

4. When the component is placed and selected, use 'Edit Type' to access the identity data of the components including ACV contact details, COBie data and PDT information.

Other Notes

This component is for design intent only and the data contained within should be treated as such. Please contact the manufacturer for more details and product literature.

You can add these family components to your company template file, they will then be available without loading when starting a new project.

Revisions

Version 1.0 - First Issue

bimstore.co.uk

North East
Spaceworks
Benton Park Road
Newcastle Upon Tyne
NE7 7LX

T: +44 (0)191 223 6600
F: +44 (0)191 223 6610