



**Eurofluid**  
HANDLING SYSTEMS

**INNOVATIVE *HIU* PRODUCTS**

**INTELLIGENT HEAT INTERFACE UNITS**

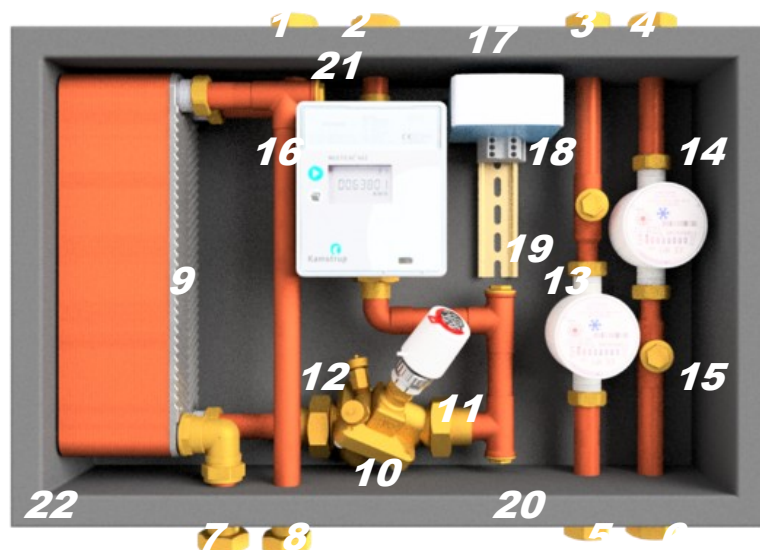
[www.euro-fluid.com](http://www.euro-fluid.com)

## ***-Utility Master***

## ***SINGLE PLATE HIU*** *Heat + CWS with separate DHW storage*

### **Key Components:**

1. Network Primary Flow Connection 3/4"
2. Network Primary Return Connection 3/4"
3. Cold Water Services Supply 3/4"
4. Drinking Water Services Supply 3/4"
5. Cold Water Services Feed 3/4"
6. Drinking Water Services Feed 3/4"
7. Internal Primary Return 3/4"
8. Internal Primary Flow 3/4"
9. Plate Heat Exchanger
10. AB-QM DN25 Pressure Independent Control Valve
11. TWA-Z Actuator
12. Test Points
13. Cold Water Meter
14. Drinking Water Meter
15. Spare sensor point
16. Heat Meter



17. M-Bus Relay
18. DIN Rail Wiring
19. Spare sensor point on network primary return
20. Spare external sensor point on network primary
21. Spare sensor point on internal primary flow
22. EPP Casing

### **Description:**

- The UM2 Utility–Master provides an indirect primary interface to a heat network for up to 30kW load, and is designed to work in partnership with a hot water cylinder for DHW. The UM2 is fitted with two separately metered water supplies for drinking water and CWS. At only 590 x 390 x 165mm the unit is very compact, using a moulded EPP casing for insulation and structural strength, and voids within the casing are filled with further removable moulded insulation.
- Equipment fitted inside the Utility–Master range is limited to the provision of heat and cold water, and as such it does not include the internal heating or DHW controls. These are left to the installer, and can be maintained separately without the need to access the UtilityMaster, or break any security seals.

# -Utility Master

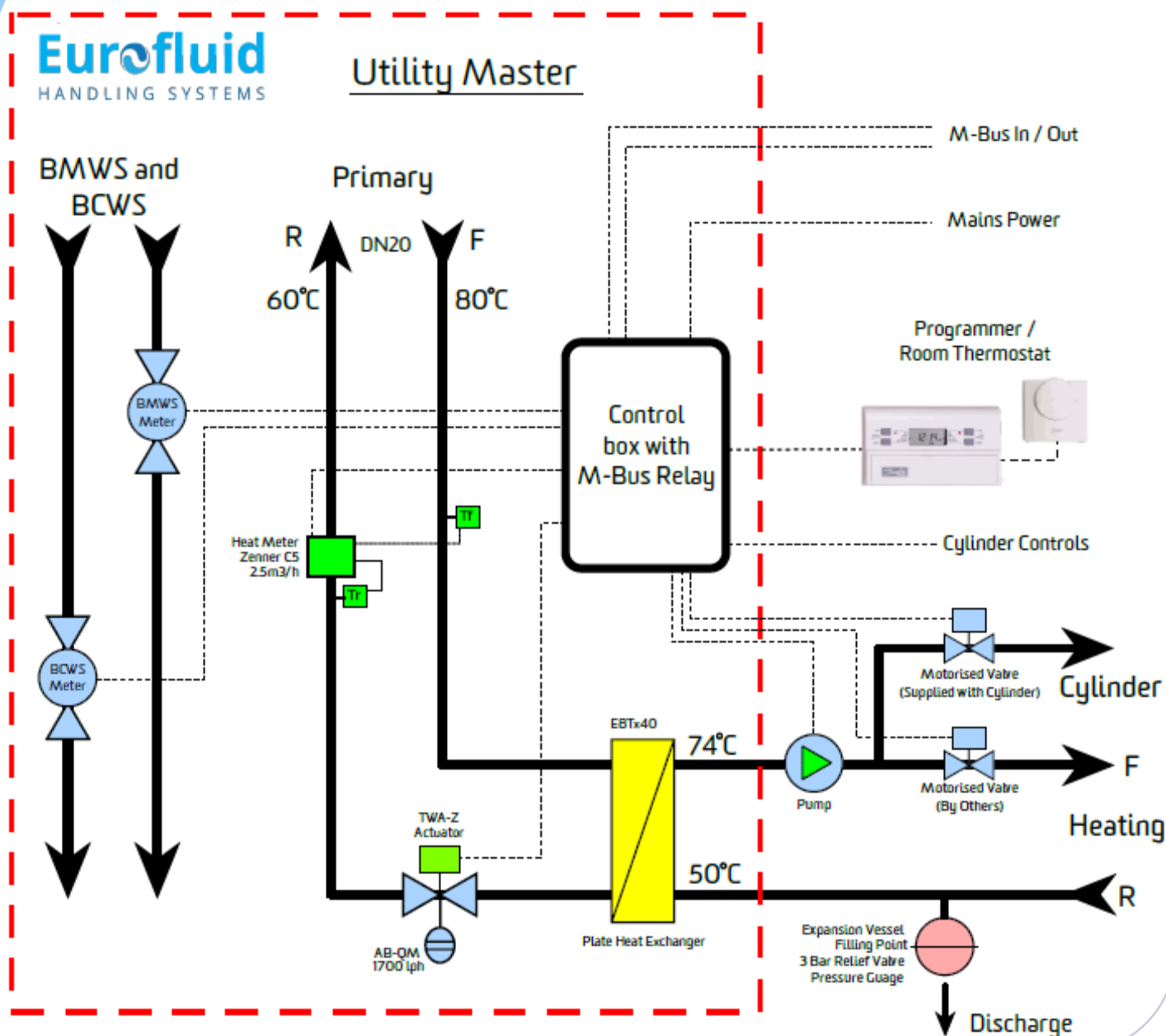
## SINGLE PLATE HIU Heat + CWS with separate DHW storage

### ✓ Features:

To manage utility supply the UM2 is fitted with:

- 2 x cold water meters with pulsed output
- Heat meter with M-Bus and 2 x pulse counters (for cold meters)
- Pressure independent control valve for up to 1.7m<sup>3</sup>/h fitted with thermo-electric actuator
- M-Bus relay for remote closure of control valve (prepay billing)
- Steel outer cladding with security bolts to the wall and cut outs for heat meter and water meter displays

### ✓ System Layout:

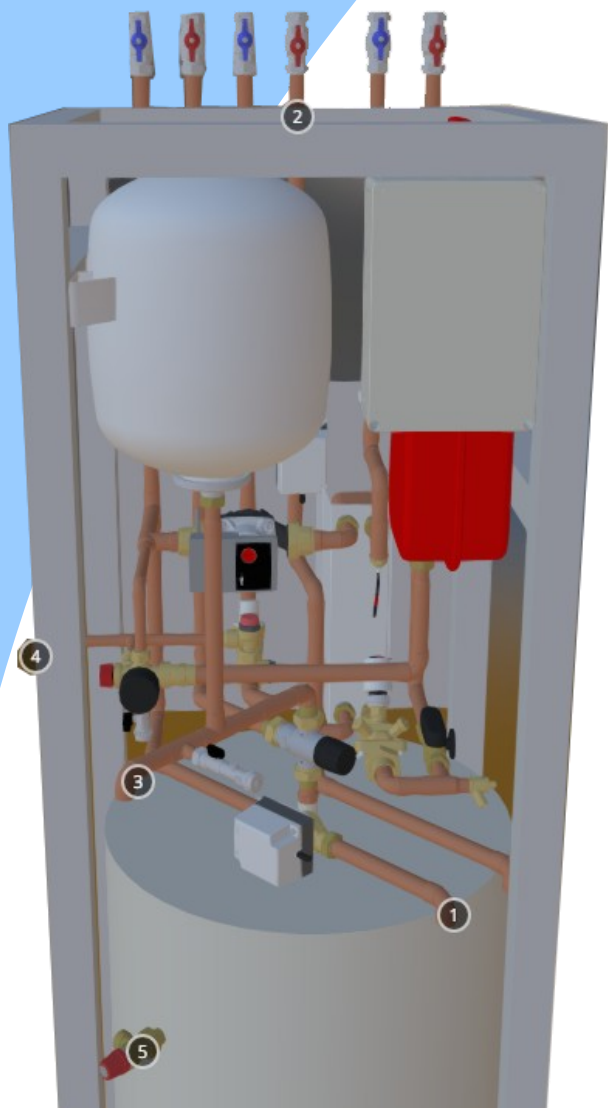


# **-Utility Master**

## **SINGLE PLATE HIU** *Heat + CWS with separate DHW storage*



### Utility Master + Storage



#### **Features:**

- ✓ Hot Water Priority
- ✓ Heating Pump ErP Compliant
- ✓ Hot Water Return Pump ErP Compliant
- ✓ Aluminium Frame + Enclosure
- ✓ Duplex Stainless Steel Cylinder
- ✓ Heating and DHW Expansion Vessels
- ✓ CWS and MWS Water Meters
- ✓ Landlord Security Valve
- ✓ Remote Control via Mbus

- ✓ DHW Mixing Valve
- ✓ Primary Side Safety Valve
- ✓ Secondary Side Unvented Kit
- ✓ Dual Plate High Performance Heat Exchanger
- ✓ WRAS Approved

